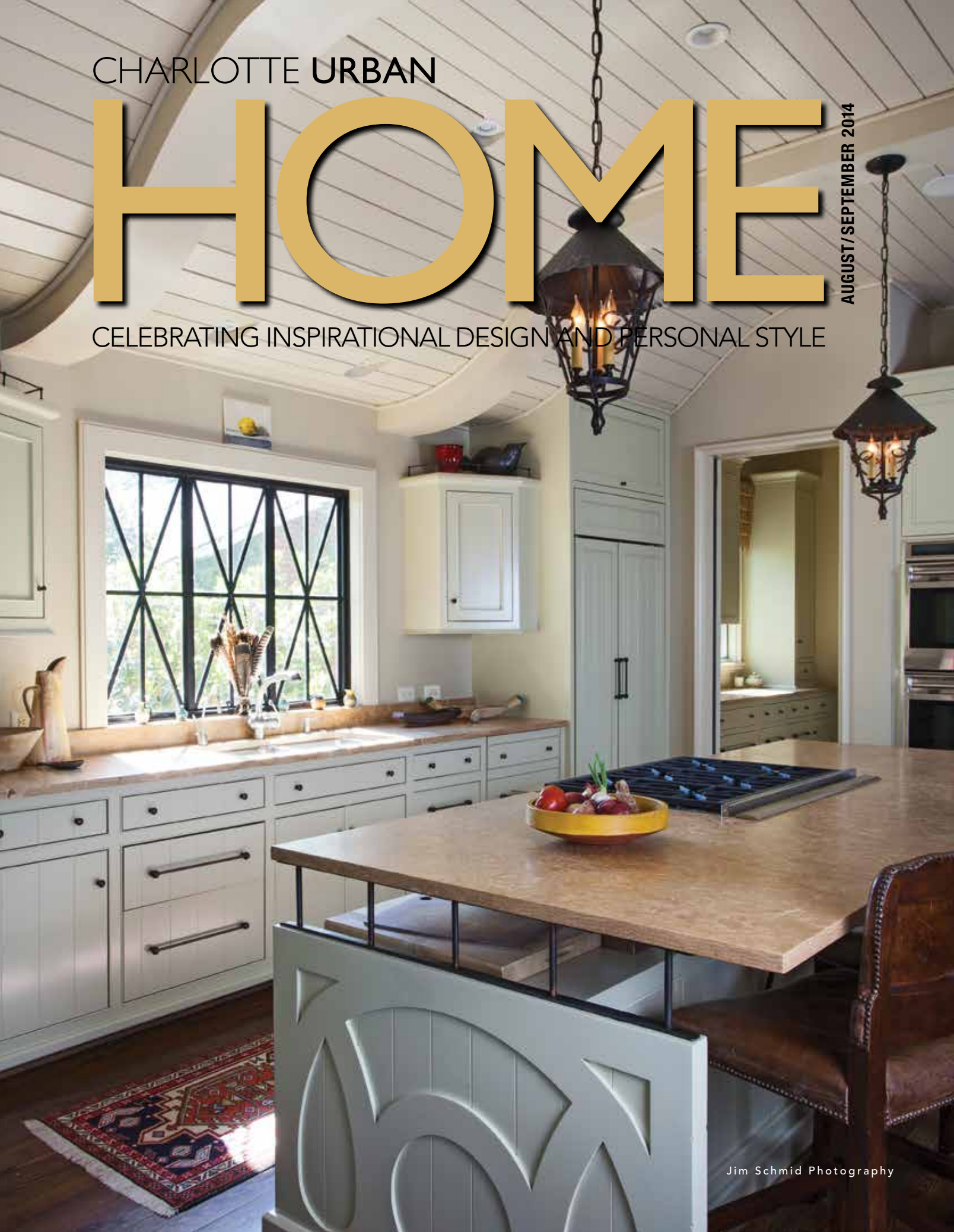


CHARLOTTE URBAN

HOME

AUGUST/SEPTEMBER 2014

CELEBRATING INSPIRATIONAL DESIGN AND PERSONAL STYLE






A PLACE FOR EVERYTHING

AND EVERYTHING IN ITS PLACE

By Anne Marie Ashley
Photography by Jim Schmid

LESLIE AND MITCHELL WICKHAM

LOOKED FOR A PERFECT HOME FOR OVER A YEAR,
AND WHEN THEY CAME ACROSS THIS LOT ON BOLLING ROAD
IN DECEMBER OF 2006, THEY WERE CERTAIN THEY'D
FOUND A LOCATION FOR THEIR IDEAL HOME.

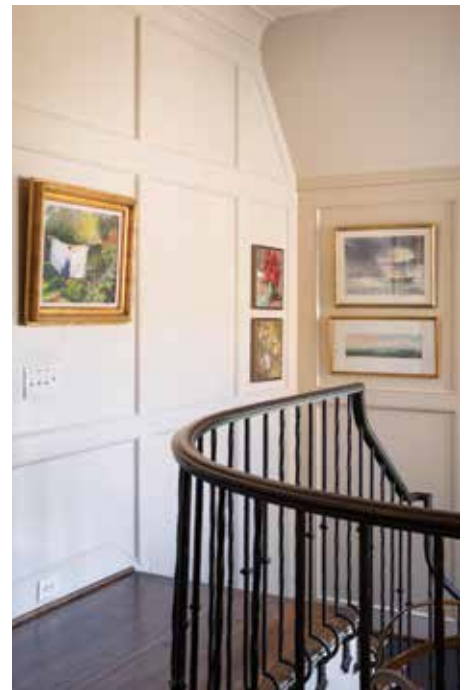


THEY CALLED IN A TEAM OF PROFESSIONALS TO HELP build a home that was ideal for their family, but also looked like it had long been a part of the Eastover neighborhood. “We liked the village feel,” explains Leslie. “We take advantage of the tree-shaded sidewalks and walk-ability of the neighborhood.”

Architectural designer Frank Smith visited the empty lot with the couple and drew up plans for a home that included a lot of natural light and the ability to see the gardens outside from all angles in the home. “The architectural style of the house is designed with a playful geometry,” explains Frank. “It’s inspired by an Edwin Lutyens English country house, selected to reflect the romance of the outdoor life, the hospitality

and the heritage of the Wickham family.” Emily Bourgeois designed a kitchen for family and friends to gather around complete with a large island with plenty of storage. John Byrd landscape design spent a year with the couple choosing just the right plants and landscaping for year-round enjoyment of their outdoor spaces. And Mark Phelps Interior Design rounded out the finished home with a cozy traditional aesthetic perfect for the family’s collection of art and favorite pieces. The paneling up the staircase, in fact, was designed after Leslie’s grandmother’s home, a perfect set-up to display the many pieces collected over their marriage. “We wanted to build a home that had the character and integrity of an original Eastover home,” offers Mark. “But built from the ground-up.”





THE
ARCHITECTURAL
STYLE OF
THE HOUSE
IS DESIGNED
WITH A PLAYFUL
GEOMETRY.

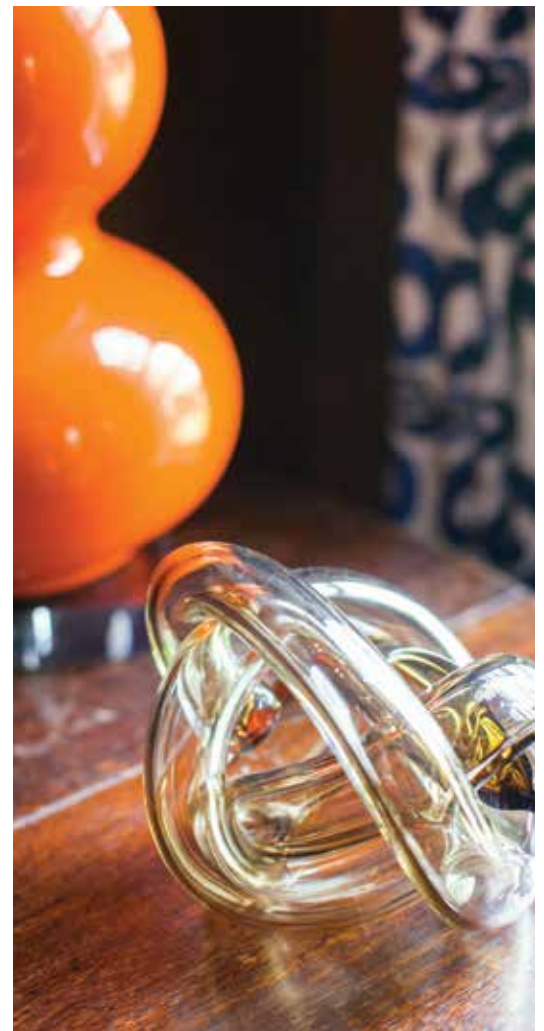


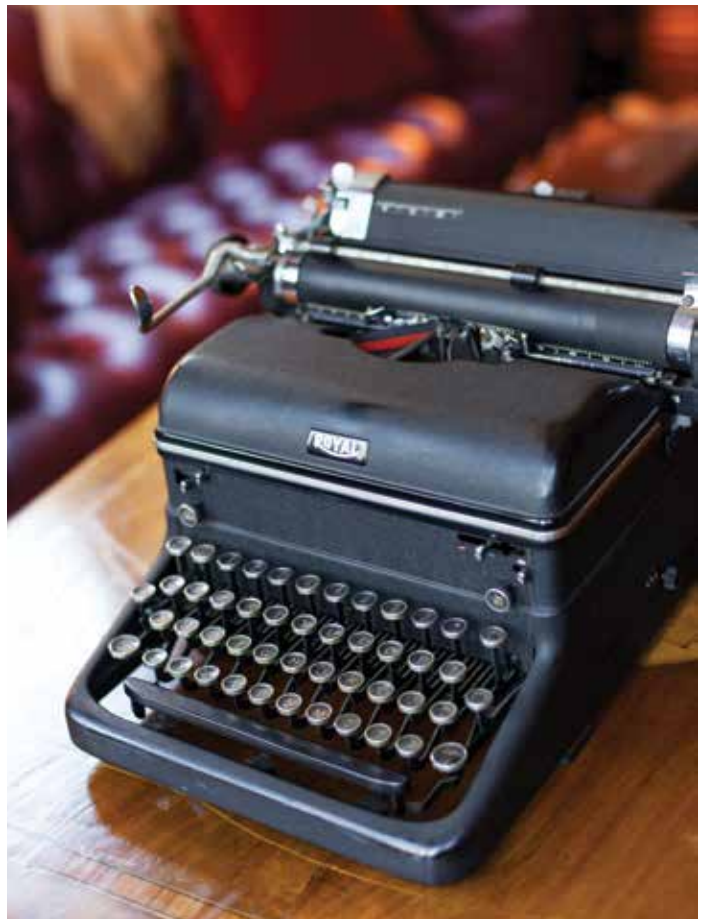


Mark worked closely with Frank on the design of the home, careful to consider the architectural details that would add character and authenticity to the structure. “The interiors are laid out in a completely different expectation from the exterior’s first impression,” offers Frank. “It is a system of organized space designed to create movement and accommodation; rooms positioned on axial aligned site lines from multiple directions with a mathematical logic that is a paradox of the exterior’s playful whimsical character.”

The design and build phase took almost two full years to complete, with everyone working together to create a cohesive look to the inside and outside of the home. “Good design is giving the client a space that fits their personality,” says Mark. “Choose a team that you’re comfortable with and that understands your family’s lifestyle. That’s when you get results you’re happy with.” Most of the accessories and décor for the home were purchased through local shops in Charlotte, Atlanta and across the pond in England, adding to the English traditional style that punctuates the eclectic home.

Tufted leather chairs placed in front of the fireplace offer a great winter spot for the family to enjoy in their living room, while the loggia couch is perfect at dawn





year-round. A wide range of art line the walls in the stairway, highlighted by a classic chandelier, and pieces around the remainder of the home tie everything together with a harmonious design. Mark's favorite room in the home is the living room, with all its seating options and pretty

angles, while Leslie really enjoys her kitchen to gather friends and family around the counter. When asked what her advice for homeowners would be, Leslie offers this, "Don't try to do everything at once and always follow your instincts."

